



## **Tie-down and T-Hangar Fee Schedule**

Rents and fees are effective May 1, 2018 through April 30, 2019

### **Tie-downs**

Area 2

### **Single Engine**

\$106.00

### **Twin Engine**

\$121.00

### **South West T-hangars**

50-1

### **Building 50**

\$508.00

50-2

\$638.00

50-3 thru 50-10

\$462.00

### **Building 51**

H 51-1 thru 51-8

\$547.00

H51-9

\$732.00

H51-10

\$629.00

### **North East T-hangars**

Small unit

\$482.00

Medium unit




\$550.00

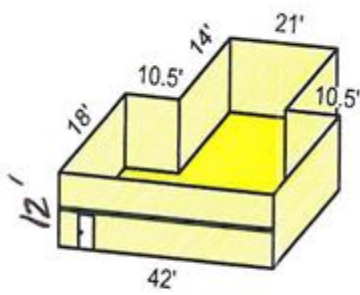
2x unit

\$643.00

## T- Hangar Diagrams

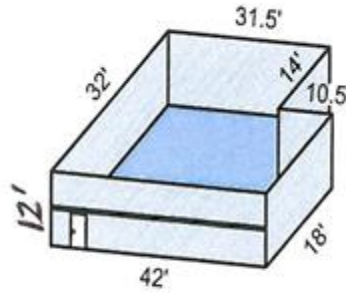
### Northeast T-Hangars

	=	\$482.00
	=	\$550.00
	=	\$643.00



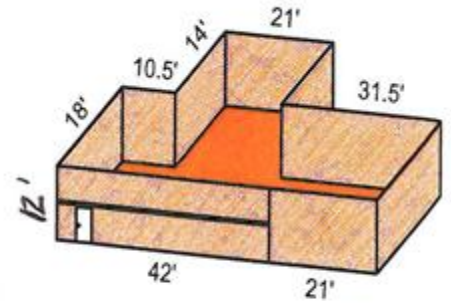
BAY 1 - 7

Approx. 1,050 sq. ft.



BAY 8

Approx. 1,197 sq. ft



BAY 2X

Approx. 1,428 sq. ft.

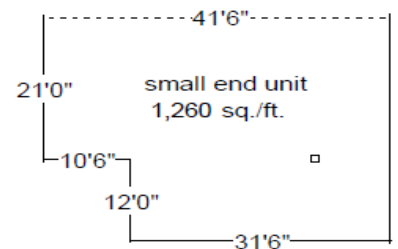
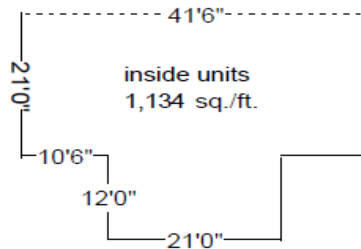
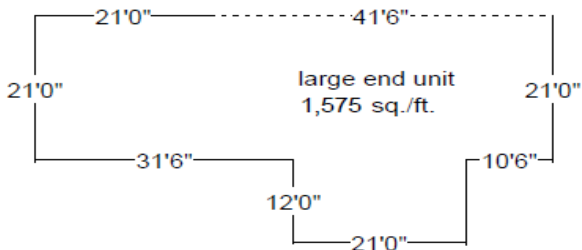
**Northeast T-hangar**

Approximate door opening height: 11'8"

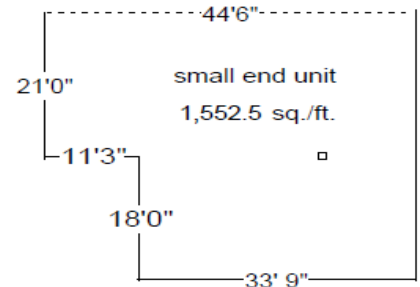
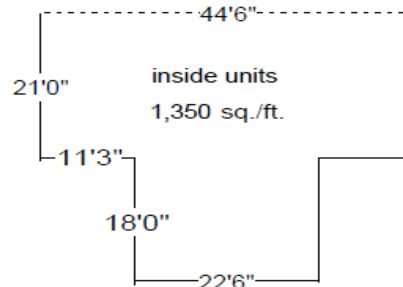
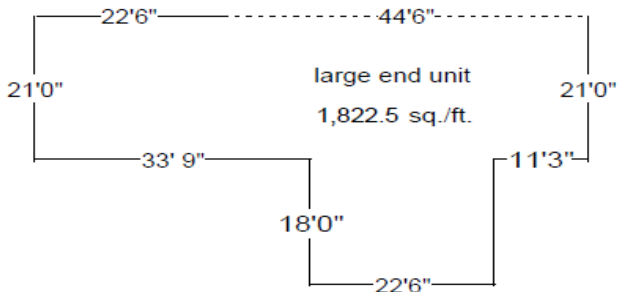
*\*Prices will adjust May 1<sup>st</sup>.*

## T- Hangar Diagrams Southwest T-Hangars

### N54-42



### N60-45



#### **N54-42 (TH50)**

**Large End Unit (50-2) = \$638.00**

**Inside Units (50-3 thru 50-10) = \$462.00**

**Small End Unit (50-1) = \$508.00**

**Approximate door opening height: 11' 4"**

#### **N60-45 (TH51)**

**Large End Unit (51-9) = \$732.00**

**Inside Units (51-1 thru 51-8) = \$547.00**

**Small End Unit (51-10) = \$629.00**

**Approximate door opening height: 13' 5"**

*\*Prices will adjust May 1<sup>st</sup>.*